

FS-MC-1 MOTORCYCLE SHIFT SENSOR

THE FS-MC-1 SHIFT SENSOR IS USED IN ALL CATERGORIES OF PROFESSIONAL MOTOR SPORT.

ITS DESIGN IS LIGHT WEIGHT BUT STILL VERY RUGGED. THE SENSOR IS TEMPERTURE COMPENSATED TO 125°C AND HAS AN EXCELLENT MECHANICAL RESPONSE.

FEATURES

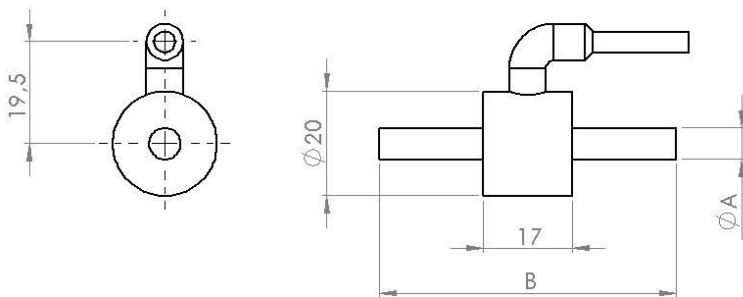
LIGHT WEIGHT DESIGN
 BUILT IN ANGLED BOOT
 HIGH QUALITY STAINLESS STEEL
 LOW COST
 THERMALLY COMPENSATED
 50, 100 AND 150KG VERSIONS

ELECTRICAL

CURRENT CONSUMPTION 23ma
 VOLTAGE INPUT RANGE 7V TO 24V
 OUTPUT 0 TO 5V
 MAXIMUM WORKING TEMP 125°C
 ACCURACY 0.5%

CABLE

28 AWG MIL SPEC WIRE
 12 V RED
 GND BLACK
 SIGNAL WHITE



://TEL/

01379 642 444

://EMAIL/

SALES@FIRSTLTD.CO.UK

<WWW.FIRSTSENSORS.CO.UK>

NEW SENSORS FOR 2017